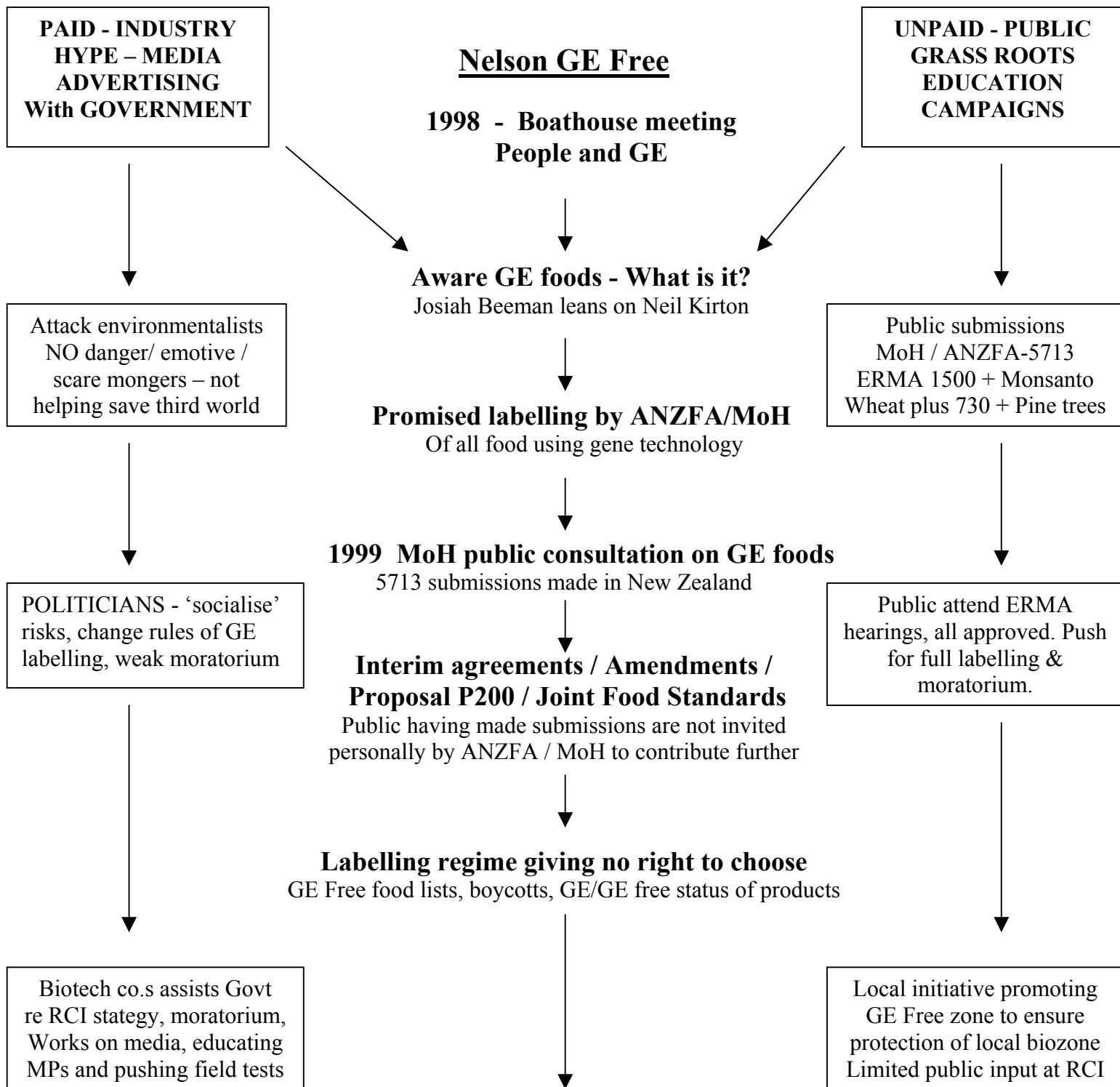


# The Process as perceived by the Nelson GE Awareness Group



**BRICK WALL BRICK WALL BRICK WALL BRICK WALL BRICK WALL BRICK WALL**

WHY is it up to the public to defend themselves in a democratic society?

**JUNE 1<sup>st</sup> 2001**

**RCI on GM RECOMMENDATIONS TO GOVERNMENT**

**?**